

030-1100 Two Point Paddle Handle



This compartment latch was designed for light to medium storage and compartment doors. This non-handed product features a two point bellcrank remote actuation

- Cross bed tool boxes
- Truck topper and lift gate doors
- Most storage, compartment, and access doors with single or two point latch mechanism

FEATURES/BENEFITS:

- Water resistant
- Sleek automotive styling
- Paddle is rigid when locked
- Single point or two point actuation
- Flush mount - contoured surface
- Corrosion resistant
- Non-handed design

Global Locations:

TriMark Corporation
500 Bailey Avenue
P.O. Box 350
New Hampton, Iowa 50659
United States
Tel: 641-394-3188
Fax: 641-394-2392
1-800-447-0343
www.trimarkcorp.com

TriMark Europe
Cedar Court
Walker road
Bardon Hill
Coalville LE67 1TU
United Kingdom
Tel: +44(0)1530 512460
Fax: +44(0)1530 512461
www.trimarkeu.com

TriMark (Xuzhou)
Building A5 Jingwu Road
Xuzhou Economic
Development Zone
Xuzhou, Jiangsu
221004 PR China
Tel: +86 516 8773 0018
Fax: +86 516 8773 0058
www.trimarkcn.com



TriMark. Interactive. Product. Selector



TriMark



TriMark Corporation

AVAILABLE:

- Non-locking or locking with shuttered keyway
- Two point actuation
- Keyed alike
- Keyed random. 50 key codes -- TM901-TM950
- With rod collars

MATERIAL:

- Housing and paddle: die cast zinc alloy
- All steel parts (axles, pivot arm, pivot plate, lock cam): zinc plate clear chromate for corrosion resistance

FINISH

- Black powder coated

INSTALLATION:

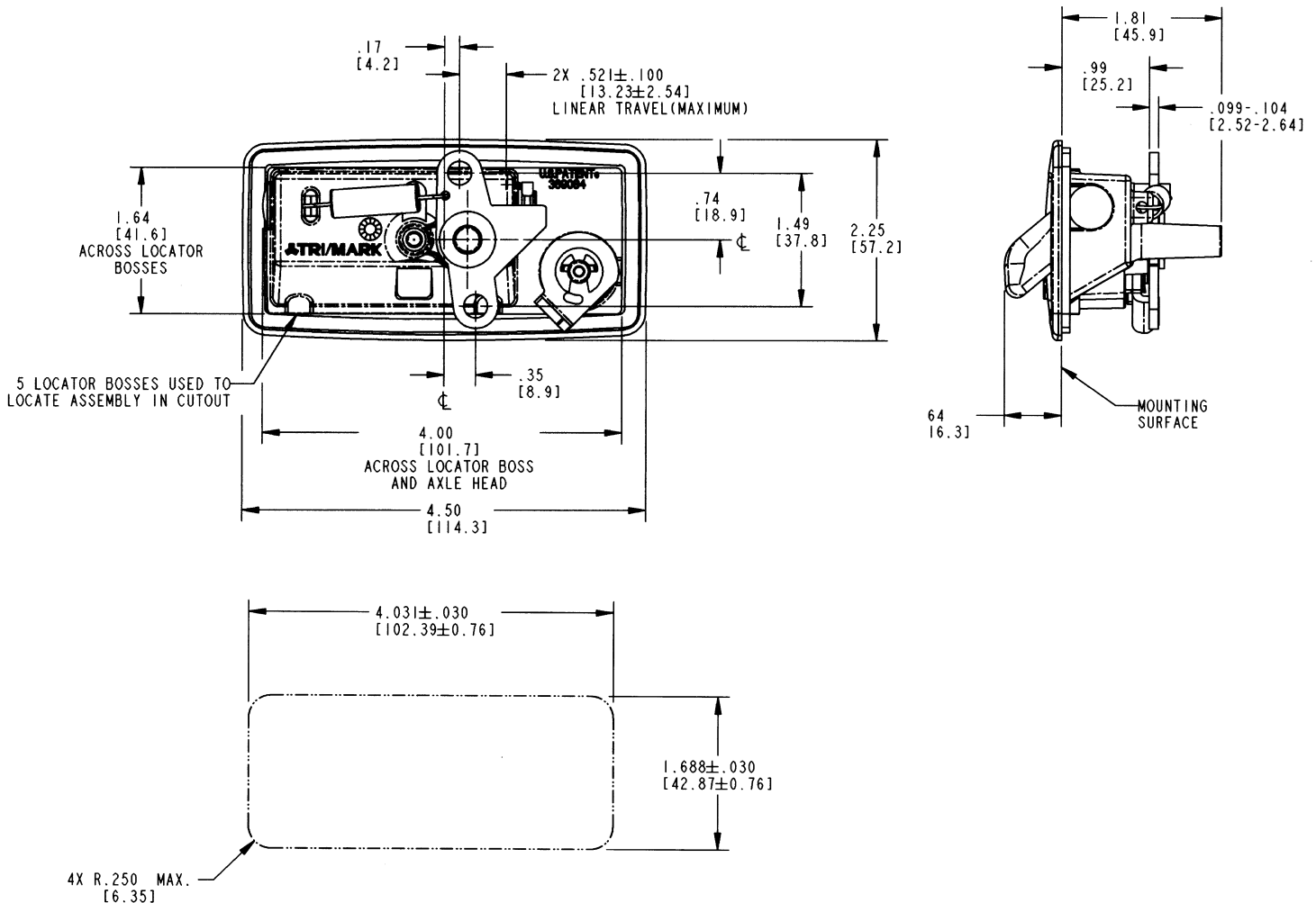
- Supplied with gasket already applied under recess in housing flange for simple, clean installation
- Single point #10-24 UNC mounting fastener
- Optional mounting brackets (please inquire)

CAUTION: Product does not meet the locking requirements for FMVSS 206 (ECE R11).

Individual part dimensions are for reference only. Refer to individual part drawings for complete dimensions, specifications, and installation procedures. Engineering assistance and application drawings are available.

Rod collars are not intended or recommended for use in applications that require FMVSS 206 (ECE R11) compliance or applications that have heavy or extreme Striker Bolt Loads (> 25 lbs./ 11 kg.) and/or high to extreme usage (> 100,000 door cycles/life).

For more information visit
www.trimarkcorp.com



RECOMMENDED CUTOUT DETAIL